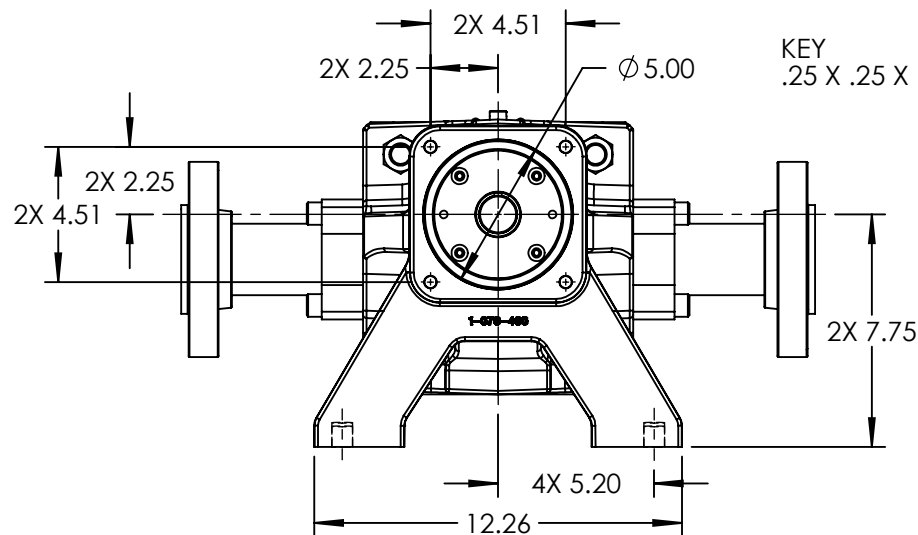
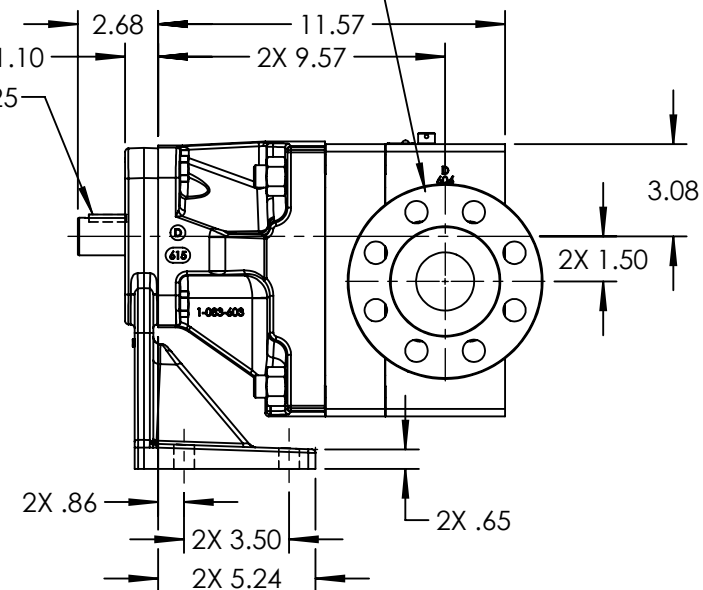


PORTS: 2X 2" CLASS 600 RAISED  
FACE FLANGES  
OPPOSITE



KEY  
.25 X .25 X 1.25



NOTES:  
1. ALL DIMENSIONS ARE FOR REFERENCE ONLY.

MODELS: GP-41420-G00-B, GP-41420-G10-B

STATE	Released	11/19/2015	DIMENSIONS ARE IN INCHES
DRAWN	tdutcher	11/6/2014	PROJECT:E162
CHECKED	CJM	11/18/2015	WAS:

**VIKING  
PUMP**

VIKING PUMP, INC.  
A Unit of IDEX Corporation  
Cedar Falls, IA 50613  
U.S.A.

THIS DRAWING IS THE PROPERTY OF  
VIKING PUMP, INC. AND IS PROPRIETARY  
IN GENERAL AND DETAIL. IT SHALL NOT BE  
COPIED OR ITS CONTENTS REVEALED TO  
OUTSIDE PARTIES WITHOUT THE WRITTEN  
CONSENT OF VIKING PUMP, INC.

**3D**

DWG. NO. SHEET 1 OF 1  
GPV-1420-035-U

REV. C.0  
11/19/2015