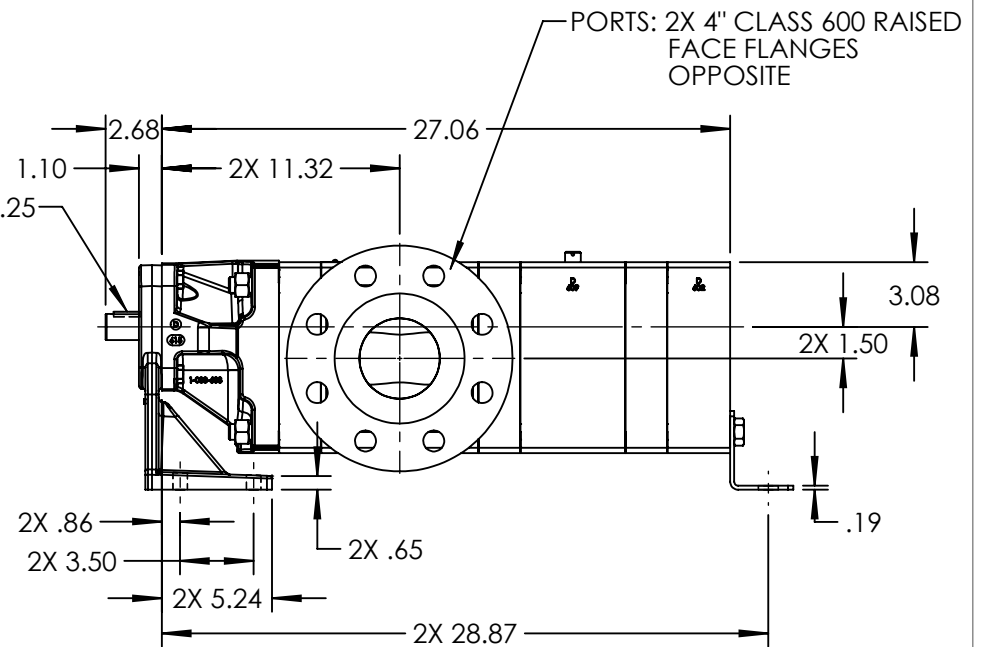


KEY
.25 X .25 X 1.25



PORTS: 2X 4" CLASS 600 RAISED
FACE FLANGES
OPPOSITE

MODEL: GP-41460-G00-B, GP-41460-G10-B

NOTES:
1. ALL DIMENSIONS ARE FOR REFERENCE ONLY.

STATE	Released	11/19/2015	DIMENSIONS ARE IN INCHES
DRAWN	tdutcher	11/5/2014	PROJECT:E162
CHECKED	CJM	11/18/2015	WAS:



VIKING PUMP, INC.
A Unit of IDEX Corporation
Cedar Falls, IA 50613
U.S.A.

THIS DRAWING IS THE PROPERTY OF
VIKING PUMP, INC. AND IS PROPRIETARY
IN GENERAL AND DETAIL. IT SHALL NOT BE
COPIED OR ITS CONTENTS REVEALED TO
OUTSIDE PARTIES WITHOUT THE WRITTEN
CONSENT OF VIKING PUMP, INC.

3D

DWG. NO. GPV-1460-006-U

SHEET 1 OF 1

REV. C.0

11/19/2015